

# High-Purity Ball Valves(3", 4" & 6")

HBV02-TB  
03/04

# Staitech

## High-Purity Ball Valves(3", 4" & 6")

The high-purity ball valves offered by Staitech are a full bore/full port design according to ASTM A 269 dimensions. Valves are supplied as standard with an ISO NAMUR direct mount pad which allows actuator fitment without compromising the integrity of the valve.

3", 4" & 6" valves are available with Tri-Clamp compatible® or extended tube weld end connections suitable for orbital welding. Seats are manufactured in TFM, a resilient form of PTFE which complies with FDA and USP criteria. Cavity filled seats are also available.

A range of pneumatic and electric actuator packages are also available, including solenoid valve and switch box options.

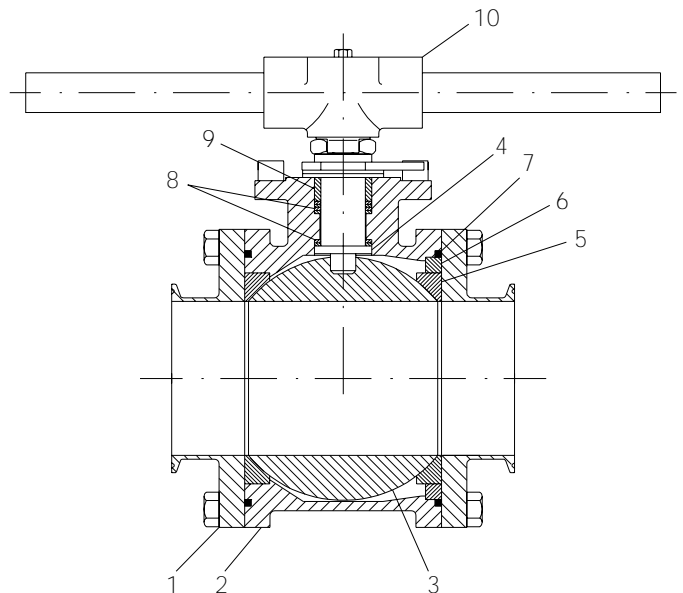
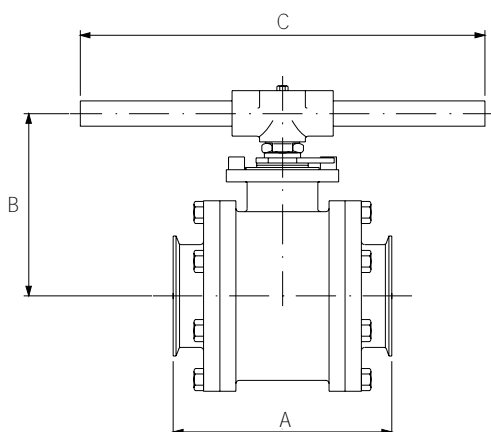
For 1/2" - 2-1/2" valves see data sheet HBV-01.

### Features offered by the 3", 4" & 6" High-Purity Ball Valve range include:

- 316L stainless steel construction with low ferrite - provides optimum corrosion resistance.
- High specification surface finish including optional electropolishing - easily satisfy the majority of steam system requirements.
- Three-piece body design - simplifies installation and maintenance.
- Range of actuator options - assembled and tested packages from one source ensures full compatibility.

### Product specification

Sizes	3", 4" & 6"
Connections	O.D. Tube or Tri-Clamp® compatible
Maximum steam temperature:	200°C @ 10 barg
Options:	Pneumatic & electric actuation packages Oval handle, stem extensions, locking device



### Materials of construction

1.	End connections	316L Stainless steel
2.	Body	316L Stainless steel
3.	Ball	316L Stainless steel
4.	Stem	316L Stainless steel
5.	Seats*	TFM
6.	Seat retainer	316 stainless steel
7.	Body seals	PTFE
8.	Stem seals	Peek/PTFE
9.	Gland packing	316L stainless steel
10.	Handle assembly	304 stainless steel

\*Cavity filled seats also available. Seat & seal materials FDA and USP Class VI compliant. Full parts breakdown available on request.

### Surface finish

Internal body surfaces	0.5 microns Ra
External	Cast/machined

Enhanced surface finishes and electropolished valves also available

### Dimensions(mm)

	A Tri-Clamp	A Tube	B	C*	Torque (Nm)**	Weight (kg)
3"	178	267	184	350	45	14.5
4"	216	318	203	560	80	21.5
6"	428	406	282	600	225	68.0

\*Handle can be configured as 'Tee' bar or lever arm

\*\*Torque figures are for valves with open seats when used in clean service, without safety factor applied. For cavity filled seats and non-clean service applications please consult Staitech for applicable torque figures.

Specification subject to change without notice