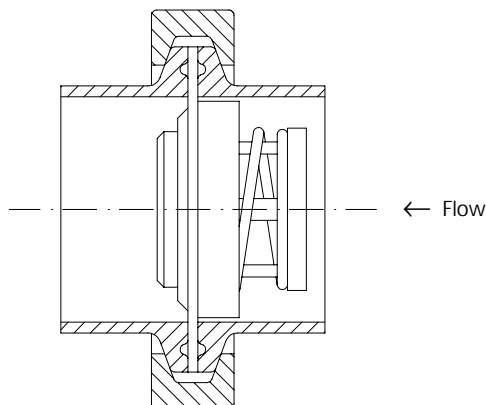
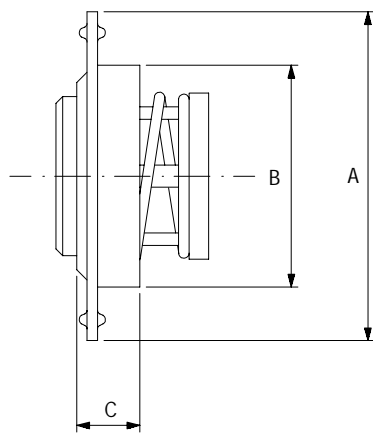
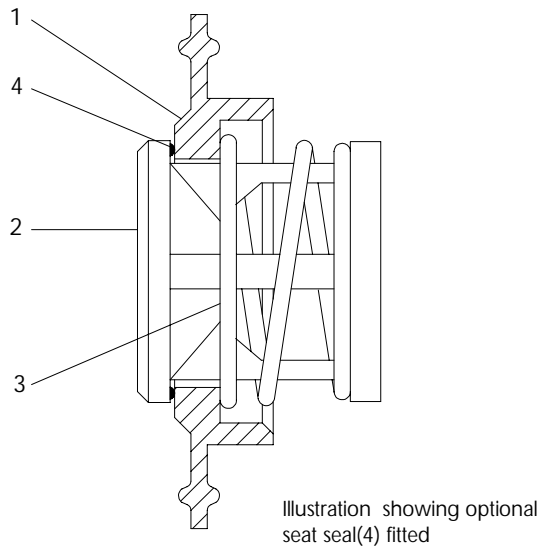


Sanitary Insert Valve

HCV-03
04/02

Staitech



Installed valve

Sanitary Insert Valve

The sanitary insert valve is designed to fit between Tri-Clamp® compatible fittings, replacing the standard joint sealing gasket. The valve is suitable for a wide range of duties in liquid and gas service, including pressure relieving and anti-vacuum applications.

The sanitary insert valve is available with a number of soft seat and spring options, details of which are listed below.

Product specification

Sizes	3/4", 1", 1-1/2", 2", 2-1/2", 3" & 4"	
Fitting type	Tri-Clamp® compatible	
Maximum operating pressure:		
3/4" to 2" valves	3.8 barg at 38°C	
2-1/2" - 4" valves	1.4 barg at 38°C	
Operating temperature range:		
Standard valve	-196°C to 205°C	
With EPDM seat seal	-57°C to 150°C	
With Viton seat seal	-23°C to 205°C	

Opening pressure*	35 mbar
-------------------	---------

*8, 100 and 240 mbar spring options available upon request

Materials of construction

1.	Body	PTFE
2.	Valve head	PTFE
3.	Spring*	316 Stainless steel
4.	Optional seat insert	EPDM or Vton

*also available PTFE encapsulated

Dimensions(mm)

	A	B	C	Orifice
3/4"	21.6	15.0	14.0	8.8
1"	50.5	21.6	14.0	11.8
1-1/2"	50.5	34.0	14.0	22.6
2"	64.0	46.7	14.5	28.8
2-1/2"	76.2	59.7	15.2	35.2
3"	88.9	72.1	16.3	51.4
4"	117.5	96.5	19.8	65.0