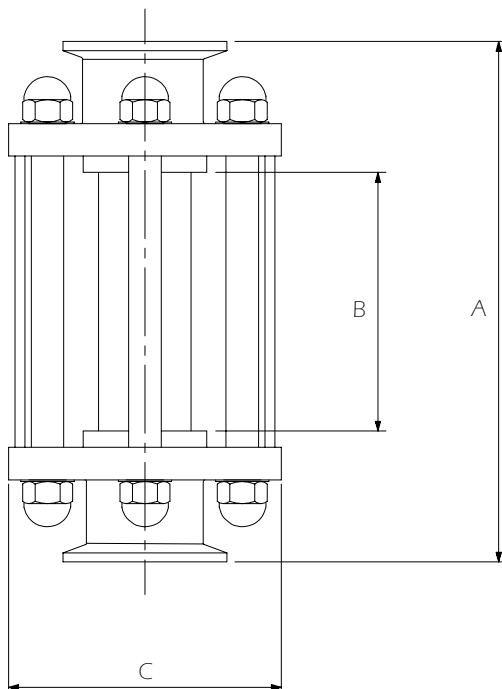
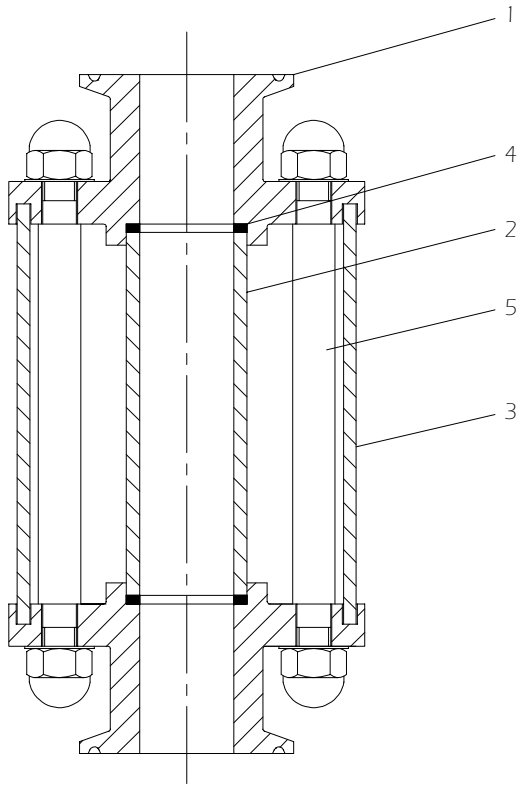


Full View Sight Glass

HSG-03
08/98

Staitech



Full View Sight Glass

The full view range of sight glasses are designed for installation in tubing systems from 1/2" to 2" and have Tri-Clamp® compatible connections. A polycarbonate knock shield protects the glass viewing tube from accidental damage, and allows the unit to be cleaned easily.

Product specification

Sizes	1/2", 3/4", 1", 1-1/2" & 2"
Connections	Tri-Clamp® compatible
Operating conditions	6 barg @ 150°C
Maximum allowable instantaneous temperature	120°C
Surface finish	
Internal	0.5 microns Ra
External	0.8 microns Ra
Options	Alternative lengths, larger sizes, PTFE lining, electropolishing

Materials of construction

1.	End connection	316L Stainless steel
2.	Glass	Borosilicate
3.	Knock shield	Polycarbonate
4.	Seal	PTFE composite
5.	Tie rod & fixings	Stainless steel

Dimensions(mm)

	A	B	C
1/2"	145	70	54
3/4"	145	70	54
1"	160	80	84
1-1/2"	160	80	84
2"	175	95	105

Specification subject to change without notice