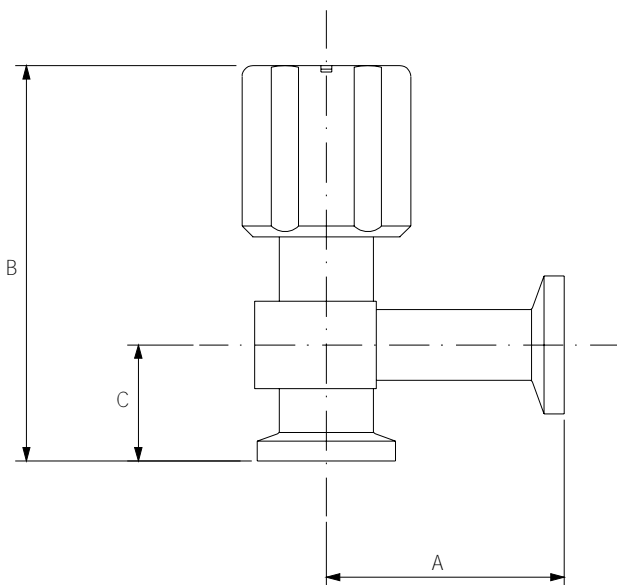
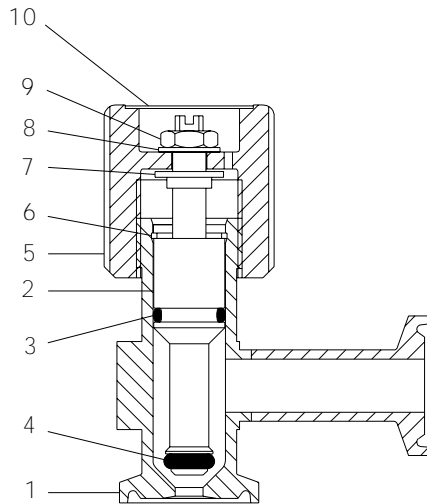


HSV60 Steam Sampling Valve

HSV60-TB
08/04

Staitech



HSV60 Steam Sampling Valve

Designed for use in high purity steam systems, the HSV60 utilises a steam resilient Kalrez seat seal to ensure optimum service life and bubble tight shut-off. The HSV60 is designed to connect directly onto the HSC30 and HSC60 sample coolers units using a 1/2" Tri-Clamp® compatible fitting. The HSV60 can also be used for any general steam sampling application where a throttling valve is required.

Product specification

Connections	1/2" Tri-Clamp® compatible
Maximum operating pressure	8.0 barg
Maximum operating temperature	176°C
Surface finish	
Wetted surfaces	0.5 microns Ra
External surfaces	Satin polish

Materials of construction

1.	Body	316L Stainless steel
2.	Valve stem	316L Stainless steel
3.	Stem seal	Viton(FDA compliant)
4.	Seat seal	Kalrez(FDA compliant)
5.	Handle	Polyetherimide
6.	Retaining ring	Stainless steel
7.	Stem Washer	Stainless steel
8.	Handle washer	Stainless steel
9.	Stem retaining nut	Stainless steel
10.	Handle closure	Stainless steel

Dimensions(mm)

A	B	C
43	72(open)	21