

Type 483 Safety Relief Valve

Installation and Maintenance Instructions

IM-483
11/05

IM-483
11/05

Staitech

Type 483 Safety Relief Valve

The Type 483 safety relief valve is designed to relieve pressure in steam, liquid and gas systems operating up to 16 barg. Each valve leaving the factory will have been set at a specified pressure. A locking wire with lead seal will have been fitted to the valve body/cap after setting. If this seal is missing, or has been tampered with, the valve should be returned to the Staitech for resetting.

Valves for steam service may have been fitted with a resilient seat seal insert.

Installation(see over for illustrations)

Steam and gas applications:

1. Attach the valve inlet to the system connection by means of the shortest possible length of pipe with no intervening valve or fittings. The valve should be mounted vertically.

2. Connect the discharge piping. This should be of equal or larger diameter to that of the valve outlet. Ensure that this pipework is adequately supported and directed to a safe visible point of discharge. In steam relief applications where the outlet pipework is directed upward, an open drain must be provided at its lowest point.

Liquid applications:

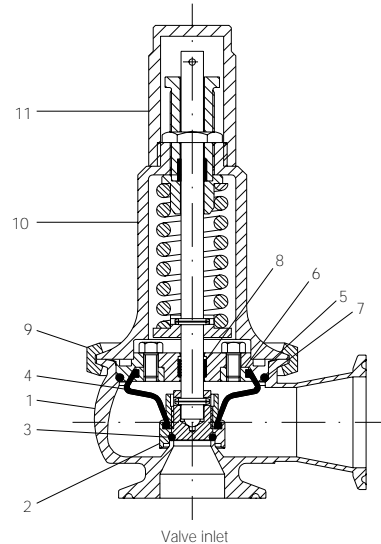
1. In liquid relief applications, discharge pipework should have a continuous downward gradient to assist drainage. The valve may also be installed at an angle as illustrated to ensure that the valve body fully drains after discharge.

Valves with lifting device fitted:

Rotating the lifting device clockwise will lift the valve disc assembly. A lift indicator on the top of the lifting device shows the position of the disc assembly. When level with the top of the lifting device the valve is in the fully closed position.

Maintenance

The set pressure and internal condition of the safety valve should be checked every twelve months. The relieving mechanism can be removed from the body for inspection without affecting the valves set pressure by loosening the body clamp and removing the upper body(10). If the seat seal(3) is worn or damaged the valve should be returned to Staitech for refurbishment and re-setting.



Components

1.	Lower body and seat
2.	Disc assembly
3.	Soft seat insert
4.	Bellows*
5.	Guide PLate
6.	Guide plate insert
7.	Body seal
8.	Stem seal
9.	Clamp
10.	Upper body
11.	Cap/lifting device

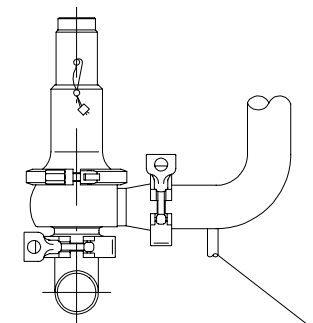
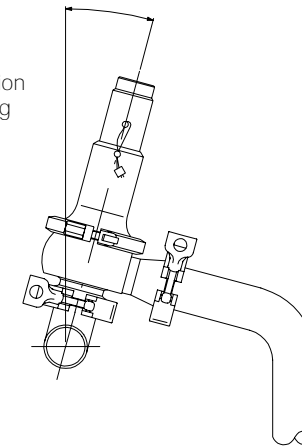
*Bellows may be omitted for steam duty

Available Spares

Kit comprising seat seal(3), bellows(4) & body O-ring(7)

Note: Before removing a valve for testing or inspection, ensure that the system pressure has been fully relieved.

Angled installation
to assist draining



Discharge drain must be
fitted in steam service