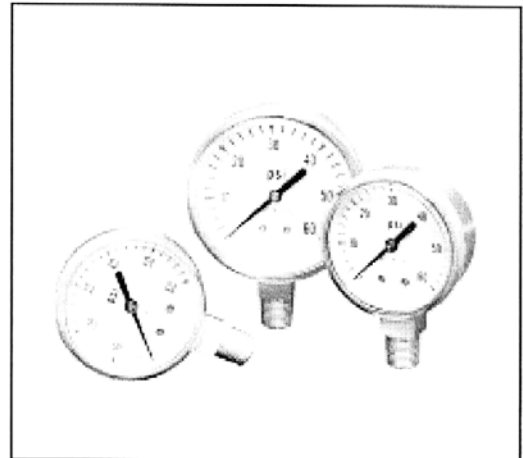


Specifications

- Accuracy
 - Brass:
ASME B40.1 Grade B, middle half of scale - 2% of scale range, remainder: 3%
 - Stainless Steel:
Grade A, middle half of scale - 1% of scale range, remainder: 2%
- Bourdon Tube
 - Phosphor Bronze, Beryllium copper or Stainless Steel, depending on gauge style and pressure
- Connections
 - Brass:
1/4" NPT
 - Stainless Steel:
1/4" male NPT or 1/4" VCR® male swivel
- Movement
 - Brass:
Quality brass construction with gears precision generated and bearing surfaces finely finished to insure smooth motion and extended service life
 - Stainless Steel:
Glasstuf links with stainless steel pins
- Cleaning
 - ASME B40.1 Level IV

VCR® is a registered trademark of Cajon Co.



Advantages

- Designed for general, laboratory and semiconductor applications involving the measurement of compressed gases compatible with the materials of construction
- Stainless Steel gauges feature all 316 Stainless Steel tube and connections

Gauges

Industrial Controls Division

316 Stainless Steel Gauges

PART NUMBER	SCALE	MAXIMUM PRESSURE
2" Diameter 1/4" NPT		
62837-0030N20	PSI/Bar	30
62837-0060N20	PSI/Bar	60
62837-0100N20	PSI/Bar	100
62837-0200N20	PSI/Bar	200
62837-0400N20	PSI/Bar	400
62837-0600N20	PSI/Bar	600
62837-1000N20	PSI/Bar	1000
62837-2000N20	PSI/Bar	2000
62837-3000N20	PSI/Bar	3000
62837-4000N20	PSI/Bar	4000
62837-V015N20	PSI/Bar	30/0/15
62837-V030N20	PSI/Bar	30/0/30
62837-V060N20	PSI/Bar	30/0/60
62837-V100N20	PSI/Bar	30/0/100
62837-V200N20	PSI/Bar	30/0/200
2-1/2" Diameter 1/4" NPT		
62837-0060N25	PSI/Bar	60
62837-0100N25	PSI/Bar	100
62837-0200N25	PSI/Bar	200
62837-0400N25	PSI/Bar	400
62837-0600N25	PSI/Bar	600
62837-4000N25	PSI/Bar	4000
62837-7500N25	PSI/Bar	7500
62837-10000N25	PSI/Bar	10000

High Purity Controls Division

316 Stainless Steel Gauges

PART NUMBER	SCALE	MAXIMUM PRESSURE
2" Diameter 1/4" VCR® Male Swivel		
4802-0030M	PSI/Bar	30/2
4802-0060M	PSI/Bar	60/4
4802-0100M	PSI/Bar	100/7
4802-0200M	PSI/Bar	200/15
4802-0600M	PSI/Bar	600/40
4802-4000M	PSI/Bar	4000/275
4802-V030M	PSI/Bar/inches Hg	30/2/30"
4802-V060M	PSI/Bar/inches Hg	60/4/30"
4802-V100M	PSI/Bar/inches Hg	100/7/30"

Brass Gauges

PART NUMBER	SCALE	MAXIMUM PRESSURE
2" Diameter 1/4" NPT		
60500-0030N	PSI	30
60500-0060N	PSI	60
60500-0100N	PSI	100
60500-0200N	PSI	200
60500-0400N	PSI	400
60500-0600N	PSI	600
60500-1000N	PSI	1000
60500-2000N	PSI	2000
60500-3000N	PSI	3000
60500-4000N	PSI	4000
60500-6000N	PSI	6000
62838-0060N20	PSI/Bar	60
62838-0100N20	PSI/Bar	100
62838-0200N20	PSI/Bar	200
62838-0400N20	PSI/Bar	400
62838-0600N20	PSI/Bar	600
62838-1000N20	PSI/Bar	1000
62838-2000N20	PSI/Bar	2000
62838-3000N20	PSI/Bar	3000
62838-4000N20	PSI/Bar	4000
2-1/2" Diameter 1/4" NPT		
62838-0060N25	PSI/Bar	60
62838-0100N25	PSI/Bar	100
62838-0200N25	PSI/Bar	200
62838-0400N25	PSI/Bar	400
62838-0600N25	PSI/Bar	600
62838-2000N25	PSI/Bar	2000
62838-4000N25	PSI/Bar	4000
62838-7500N25	PSI/Bar	7500



WARNING! Do not attempt to select, install, use or maintain this product until you have read and fully understood the Tescom Safety, Installation & Operation Precautions.

NOTE: Product availability and specifications contained herein are subject to change without notice. Consult local distributor or factory for potential revisions and/or service related issues.