

## Ferrules

Standard ferrules are manufactured in 316L material. All ferrules are finished to the SFF1 BPE surface finish designation of 0.5 microns Ra. Standard ferrules are 28mm long. Where smaller components than the tubing size are to be used reducing ferrules are available with various tube/clamp size combinations offered.



## Standard Ferrules

316L, 0.5 Ra, 28 mm long									
Clamp size	1/4"	1/2"	3/4"	1"	1-1/2"	2"	2-1/2"	3"	4"
Order Ref	FER-025C-28	FER-050C-28	FER-075C-28	FER-100C-28	FER-150C-28	FER-200C-28	FER-250C-28	FER-300C-28	FER-400C-28

## Reducing Ferrules

316L, 0.5 Ra					
Tube Size	3/4"	1"	1"	1-1/2"	1-1/2"
Clamp Size	1/2"	3/4"	1/2"	1"	3/4"
Length (mm)	28	44.5	44.5	44.5	44.5
Order Ref	RFER-075W-050C	RFER-100W-075C	RFER-100W-050C	RFER-150W-100C	RFER-150W-075C
Tube Size	1-1/2"	2"	2"	2"	2"
Clamp Size	1/2"	1-1/2"	1"	3/4"	1/2"
Length (mm)	44.5	50	50	50	50
Order Ref	RFER-150W-050C	RFER-200W-150C	RFER-200W-100C	RFER-200W-075C	RFER-200W-050C

## Thick Wall Ferrules

Thick wall ferrules are intended for use in tank and vessel fabrications. Manufactured in 316L stainless steel, all surfaces have a finish of 0.5 microns Ra



316L, 0.5 Ra								
Clamp Size	1/2"	3/4"	1"	1-1/2"	2"	2-1/2"	3"	4"
O.D (mm)	17	23	34	47	60	72	85	110
Length (mm)	50	50	70	70	90	90	90	90
Order Ref	TWFER-050C	TWFER-075C	TWFER-100C	TWFER-150C	TWFER-200C	TWFER-250C	TWFER-300C	TWFER-400C

## Pipe Adaptor Ferrules

Pipe adaptor ferrules allow standard clamped components to be used in piping systems. All sizes are manufactured in 316L stainless steel with wetted surfaces finished to 0.8 microns Ra.



316L, 0.8 Ra			Schedule 40 Pipe	Schedule 10 Pipe
Pipe Size	Clamp Size	Length (mm)	Order Ref	Order Ref
1/2"	1/2"	25	PFER-050S40-050C	PFER-050S10-050C
1/2"	3/4"	25	PFER-050S40-075C	PFER-050S10-075C
3/4"	1/2"	25	PFER-075S40-050C	PFER-075S10-050C
3/4"	3/4"	25	PFER-075S40-075C	PFER-075S10-075C
3/4"	1"	25	PFER-075S40-100C	PFER-075S10-100C
1"	3/4"	28	PFER-100S40-075C	PFER-100S10-075C
1"	1"	25	PFER-100S40-100C	PFER-100S10-100C
1"	1-1/2"	25	PFER-100S40-150C	PFER-100S10-150C
1-1/4"	1"	28	PFER-125S40-100C	PFER-125S10-100C
1-1/2"	1"	28	PFER-150S40-100C	PFER-150S10-100C
1-1/4"	1-1/2"	28	PFER-125S40-150C	PFER-125S10-150C
1-1/2"	1-1/2"	28	PFER-150S40-150C	PFER-150S10-150C
2"	2"	28	PFER-200S40-200C	PFER-200S10-200C

## Instrument Ferrules

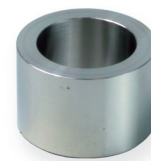
Instrument ferrules offer a simple alternative to instrument Tee's allowing diaphragm seal instruments to be used in small bore piping systems. The face of the clamp fitting is tapered to meet the tube bore thus allowing the instrument diaphragm to move freely. All sizes are manufactured in 316L stainless steel and have a surface finish of 0.5 microns Ra.



316L, 0.5 Ra					
Clamp Size	3/4"	1"	1"	1-1/2"	1-1/2"
Tube O.D	1/2"	1/2"	3/4"	1"	3/4"
Length (mm)	28	35	35	35	35
Order Ref	IFER-050W-075C	IFER-050W-100C	IFER-075W-100C	IFER-100W-150C	IFER-075W-150C
Clamp Size	1-1/2"	2"	2"	2"	2"
Tube O.D	1/2"	1 1/2"	1"	3/4"	1/2"
Length (mm)	35	35	35	35	35
Order Ref	IFER-050W-150C	IFER-150W-200C	IFER-100W-200C	IFER-075W-200C	IFER-050W-200C

## Pipe-to-Tube Socket Weld Adaptors

Where socket weld products are to be used in tubing systems Pipe-to-Tube socket weld adaptors also available. Adaptors fit in to a socket weld fitting, with an inner counter bore matching the OD of the mating tube. Fittings are machined from 316L stainless steel.



316L, 0.8 Ra						
Pipe Socket Weld Size	1/4"	3/8"	1/2"	1/2"	3/4"	1"
Tube Size	1/2"	1/2"	1/2"	3/4"	3/4"	1"
Order Ref	ADP-025SW-050W	ADP-0375SW-050W	ADP-050SW-050W	ADP-050SW-075W	ADP-075SW-075W	ADP-100SW-100W

## Pipe-to-Tube Adaptors

Pipe-to-Tube butt weld adaptors allow standard tubing components to be used in piping systems with a smooth transition between the pipe bore and tube I.D. Machined from 316L stainless steel with wetted surfaces finished to 0.5 microns Ra.



316L, 0.5 Ra			Schedule 40 Pipe	Schedule 10 Pipe
Pipe Size	Tube Size	Length (mm)	Order Ref	Order Ref
1/2"	1/2"	30	CRED-050S40-050W	CRED-050S10-050W
1/2"	3/4"	30	CRED-050S40-075W	CRED-050S10-075W
3/4"	1/2"	30	CRED-075S40-050W	CRED-075S10-050W
3/4"	3/4"	30	CRED-075S40-075W	CRED-075S10-075W
3/4"	1"	30	CRED-075S40-100W	CRED-075S10-100W
1"	1"	30	CRED-100S40-100W	CRED-100S10-100W
1-1/4"	1-1/2"	30	CRED-125S40-150W	CRED-125S10-150W
1-1/2"	1-1/2"	30	CRED-150S40-150W	CRED-150S10-150W
2"	2"	30	CRED-200S40-200W	CRED-200S10-200W

## Tank Weld Fittings

Tank weld fittings allow the flush mounting of valves, sight glasses, gauges and other instrumentation on vessels and tanks. Fittings are available to mount clamp product from 1/2" to 4" in thicknesses to suit individual fabrication requirements. Fittings are manufactured in 316L stainless steel with wetted surfaces finished to 0.5 microns Ra.



15 mm thick weld pad, 316L, 0.5 Ra			17 mm thick				20 mm thick	
Clamp Size	1/2"	3/4"	1"	1-1/2"	2"	2-1/2"	3"	4"
Order Ref	TWF-050C-15	TWF-075C-15	TWF-100C-17	TWF-150C-17	TWF-200C-17	TWF-250C-17	TWF-300C-20	TWF-400C-20
25 mm thick weld pad, 316L, 0.5 Ra			17 mm thick				20 mm thick	
Clamp Size	1/2"	3/4"	1"	1-1/2"	2"	2-1/2"	3"	4"
Order Ref	TWF-050C-25	TWF-075C-25	TWF-100C-25	TWF-150C-25	TWF-200C-25	TWF-250C-25	TWF-300C-25	TWF-400C-25
38 mm thick weld pad, 316L, 0.5 Ra			17 mm thick				20 mm thick	
Clamp Size	1/2"	3/4"	1"	1-1/2"	2"	2-1/2"	3"	4"
Order Ref	TWF-050C-38	TWF-075C-38	TWF-100C-38	TWF-150C-38	TWF-200C-38	TWF-250C-38	TWF-300C-38	TWF-400C-38
51 mm thick weld pad, 316L, 0.5 Ra			17 mm thick				20 mm thick	
Clamp Size	1/2"	3/4"	1"	1-1/2"	2"	2-1/2"	3"	4"
Order Ref	TWF-050C-51	TWF-075C-51	TWF-100C-51	TWF-150C-51	TWF-200C-51	TWF-250C-51	TWF-300C-51	TWF-400C-51

## Threaded Adaptors

Where a threaded product is to be coupled with a clamp fitting Staitech offer a range of stainless steel BSP-to-Clamp adaptors. Female fittings use a parallel thread with internal Gylon face seal while male fittings use a taper thread. Standard fittings have an internal finish of 0.8 microns Ra.



## BSP-to-Clamp Adaptors

316L, 0.8 Ra		Male Thread	Female Thread
Thread Size	Clamp Size	Order Ref	Order Ref
1/8"	1/2"	ADP-0125GM-050C	ADP-0125GF-050C
1/4"	1/2"	ADP-025GM-050C	ADP-025GF-050C
3/8"	1/2"	ADP-0375GM-050C	ADP-0375GF-050C
1/2"	1/2"	ADP-050GM-050C	ADP-050GF-050C
3/4"	1/2"	ADP-075GM-050C	ADP-075GF-050C
1/4"	3/4"	ADP-025GM-075C	ADP-025GF-075C
3/8"	3/4"	ADP-0375GM-075C	ADP-0375GF-075C
1/2"	3/4"	ADP-050GM-075C	ADP-050GF-075C
3/4"	3/4"	ADP-075GM-075C	ADP-075GF-075C
1/4"	1"	ADP-025GM-100C	ADP-025GF-100C
3/8"	1"	ADP-0375GM-100C	ADP-0375GF-100C
1/2"	1"	ADP-050GM-100C	ADP-050GF-100C
3/4"	1"	ADP-075GM-100C	ADP-075GF-100C
1"	1"	ADP-100GM-100C	ADP-100GF-100C
1/4"	1-1/2"	ADP-025GM-150C	ADP-025GF-150C
3/8"	1-1/2"	ADP-0375GM-150C	ADP-0375GF-150C
1/2"	1-1/2"	ADP-050GM-150C	ADP-050GF-150C
3/4"	1-1/2"	ADP-075GM-150C	ADP-075GF-150C
1"	1-1/2"	ADP-100GM-150C	ADP-100GF-150C
1/2"	2"	ADP-050GM-200C	ADP-050GF-200C
3/4"	2"	ADP-075GM-200C	ADP-075GF-200C
1"	2"	ADP-100GM-200C	ADP-100GF-200C
1-1/2"	2"	ADP-150GM-200C	ADP-150GF-200C
2"	2"	ADP-200GM-200C	ADP-200GF-200C

## BSP-to-Tube Adaptors

Tube-to-threaded adaptors are manufactured in 316L stainless steel material and have a 28mm long weld shoulder. Standard fittings have an internal finish of 0.8 microns Ra.

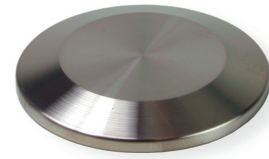


316L, 0.8 Ra		Male Thread	Female Thread
Thread Size	Tube Size	Order Ref	Order Ref
1/4"	1/2"	ADP-025GM-050W	ADP-025GF-050W
1/4"	3/4"	ADP-025GM-075W	ADP-025GF-075W
1/2"	1"	ADP-050GM-100W	ADP-050GF-100W

• Other sizes available

## Blank Caps

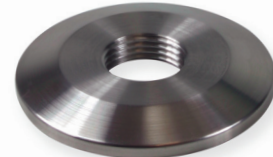
Blank caps are manufactured in 316L stainless steel with the wetted face finished to 0.5 microns Ra.



316L, 0.5 Ra						
Clamp Size	1/2" - 3/4"	1" - 1-1/2"	2"	2-1/2"	3"	4"
Order Ref	CAP-050C	CAP-100C	CAP-200C	CAP-250C	CAP-300C	CAP-400C

## Threaded Blank Caps

Where blank caps are to be fitted with a thermocouple or other similar device they can be supplied with a BSP female threaded port. A range of compression fittings to suit are also available from Staitech.



316L, 0.5 Ra						
Clamp Size	1/2" - 3/4"	1" - 1-1/2"	2"	2-1/2"	3"	4"
Thread Size	1/8"	1/8"	1/8"	1/8"	1/8"	1/8"
Order Ref	CAP-050C-0125GF	CAP-100C-0125GF	CAP-200C-0125GF	CAP-250C-0125GF	CAP-300C-0125GF	CAP-400C-0125GF
Thread Size	1/4"	1/4"	1/4"	1/4"	1/4"	1/4"
Order Ref	CAP-050C-025GF	CAP-100C-025GF	CAP-200C-025GF	CAP-250C-025GF	CAP-300C-025GF	CAP-400C-025GF
Thread Size	3/8"	3/8"	3/8"	3/8"	3/8"	3/8"
Order Ref	-	CAP-100C-0375GF	CAP-200C-0375GF	CAP-250C-0375GF	CAP-300C-0375GF	CAP-400C-0375GF

### Also available

- Multiple Ports

## Pull-Tab Blank Caps

Pull-Tab blank caps are also available which allow easy removal and holding. Larger sizes incorporate a lever port feature which allow caps to be prised without fear of damaging the sealing face or gasket.



316L, 0.5 Ra						
Clamp Size	1/2" - 3/4"	1" - 1-1/2"	2"	2-1/2"	3"	4"
Order Ref	PTCAP-050C	PTCAP-100C	PTCAP-200C	PTCAP-250C	PTCAP-300C	PTCAP-400C

## Hose Adaptors

Hose adaptors are available in a wide range of clamp and barb sizes. The clamping face on all sizes is tapered to match the barb bore ensuring complete drainability. Hose adaptors are manufactured in 316L stainless steel with wetted surfaces finished to 0.5 microns Ra.



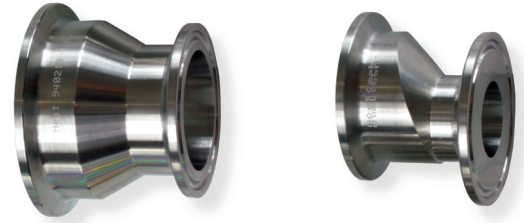
<b>316L, 0.5 Ra</b>				
Clamp Size	1/4"	1/2"	1/2"	1/2"
Barb O.D. (mm)	6.5	6.5	9.6	12.8
Barb I.D. (mm)	4.5	4.5	8.0	9.5
Length (mm)	30	30	30	40
Order Ref	HOSEB-025C-6.5B	HOSEB-050C-6.5B	HOSEB-050C-9.6B	HOSEB-050C-12.8B
Clamp Size	3/4"	3/4"	3/4"	3/4"
Barb O.D. (mm)	6.5	9.6	12.8	19.2
Barb I.D. (mm)	4.5	8.0	9.5	15.8
Length (mm)	30	30	40	40
Order Ref	HOSEB-075C-6.5B	HOSEB-075C-9.6B	HOSEB-075C-12.8B	HOSEB-075C-19.2B
Clamp Size	1"	1"	1"	1"
Barb O.D. (mm)	6.5	9.6	12.8	19.2
Barb I.D. (mm)	4.5	8.0	9.5	15.8
Length (mm)	30	30	40	40
Order Ref	HOSEB-100C-6.5B	HOSEB-100C-9.6B	HOSEB-100C-12.8B	HOSEB-100C-19.2B
Clamp Size	1"	1-1/2"	1-1/2"	1-1/2"
Barb O.D. (mm)	25.6	6.5	9.6	12.8
Barb I.D. (mm)	22.2	4.5	8.0	9.5
Length (mm)	40	30	30	40
Order Ref	HOSEB-100C-25.6B	HOSEB-150C-6.5B	HOSEB-150C-9.6B	HOSEB-150C-12.8B
Clamp Size	1-1/2"	1-1/2"	2"	2"
Barb O.D. (mm)	19.2	25.6	6.5	9.6
Barb I.D. (mm)	15.8	22.2	4.5	8.0
Length (mm)	40	40	30	30
Order Ref	HOSEB-150C-19.2B	HOSEB-150C-25.6B	HOSEB-200C-6.5B	HOSEB-200C-9.6B
Clamp Size	2"	2"	2"	-
Barb O.D. (mm)	12.8	19.2	25.6	-
Barb I.D. (mm)	9.6	15.8	22.2	-
Length (mm)	40	45	50	-
Order Ref	HOSEB-200C-12.8B	HOSEB-200C-19.2B	HOSEB-200C-25.6B	-

### Also available

- Eccentric adaptors
- Double ended adaptors

## Reducers

Concentric and eccentric reducers have a tapered bore to ensure a smooth transition between tube sizes. Reducers are manufactured in 316L stainless steel with wetted surfaces finished to 0.5 microns Ra. Whilst most sizes are machined from bar stock, larger sizes of eccentric reducer are fabricated in accordance with the ASME BPE standard.



## Concentric Reducers

Machined Reducers 316L, 0.5 Ra					
Side 1	3/4"	1"	1"	1-1/2"	1-1/2"
Side 2	1/2"	1/2"	3/4"	1/2"	3/4"
Length (mm)	40	40	40	40	40
Order Ref	CREDM-075C-050C	CREDM-100C-050C	CREDM-100C-075C	CREDM-150C-050C	CREDM-150C-075C
Side 1	1-1/2"	2"	2"	2"	2"
Side 2	1"	1/2"	3/4"	1"	1-1/2"
Length (mm)	40	60	60	45	45
Order Ref	CREDM-150C-100C	CREDM-200C-050C	CREDM-200C-075C	CREDM-200C-100C	CREDM-200C-150C
Side 1	2-1/2"	2-1/2"	2-1/2"	2-1/2"	2-1/2"
Side 2	1/2"	3/4"	1"	1-1/2"	2"
Length (mm)	60	60	55	55	55
Order Ref	CREDM-250C-050C	CREDM-250C-075C	CREDM-250C-100C	CREDM-250C-150C	CREDM-250C-200C
Side 1	3"	3"	3"	3"	-
Side 2	1"	1-1/2"	2"	2-1/2"	-
Length (mm)	60	60	60	60	-
Order Ref	CREDM-300C-100C	CREDM-300C-150C	CREDM-300C-200C	CREDM-300C-250C	-

## Eccentric Reducers

Machined Reducers 316L, 0.5 Ra					
Side 1	3/4"	1"	1"	1-1/2"	1-1/2"
Side 2	1/2"	1/2"	3/4"	1/2"	3/4"
Length (mm)	40	40	40	40	40
Order Ref	EREDM-075C-050C	EREDM-100C-050C	EREDM-100C-075C	EREDM-150C-050C	EREDM-150C-075C
Side 1	1-1/2"	2"	2"	2"	2"
Side 2	1"	1/2"	3/4"	1"	1-1/2"
Length (mm)	40	50	50	50	50
Order Ref	EREDM-150C-100C	EREDM-200C-050C	EREDM-200C-075	EREDM-200C-100C	EREDM-200C-150C

## Low Profile Elbows

For applications where height is restricted, Staitech offer a range of low profile elbows. Designed primarily for steam trap installations, fittings are available with either weld or clamp branch connection. Manufactured in 316L stainless steel with wetted surfaces finished to 0.5 microns Ra.



Clamp branch fitting - 316L, 0.5 Ra			
Outlet Clamp Size	1/2"	3/4"	1"
Order Ref	LPE90-050C-050C	LPE90-075C-075C	LPE90-100C-100C
Weld branch fitting - 316L, 0.5 Ra			
Outlet Clamp Size	1/2"	3/4"	1"
Order Ref	LPE90-050W-050C	LPE90-075W-075C	LPE90-100W-100C